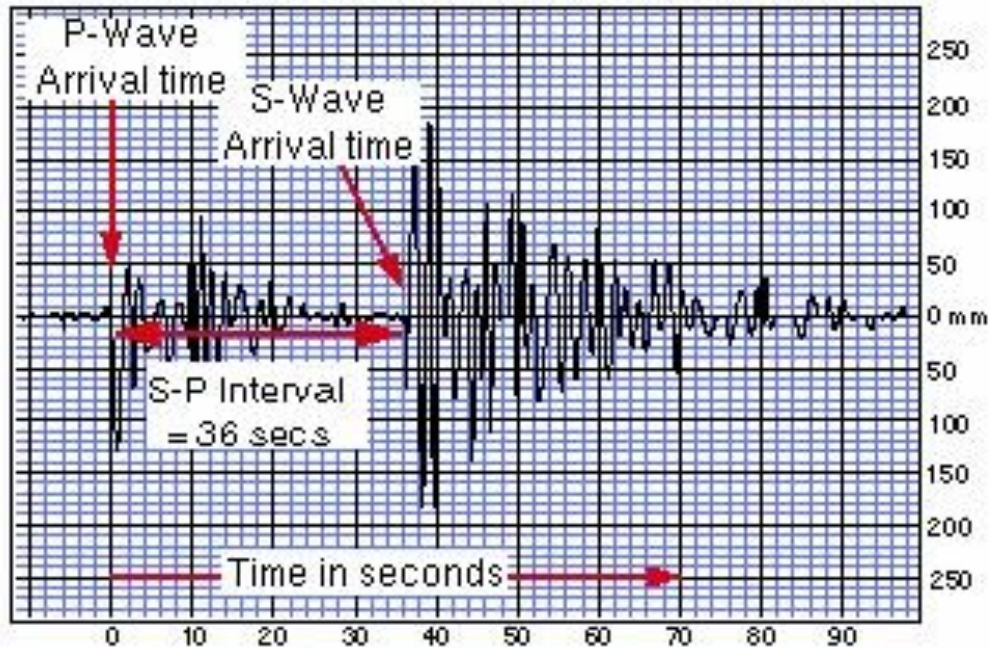
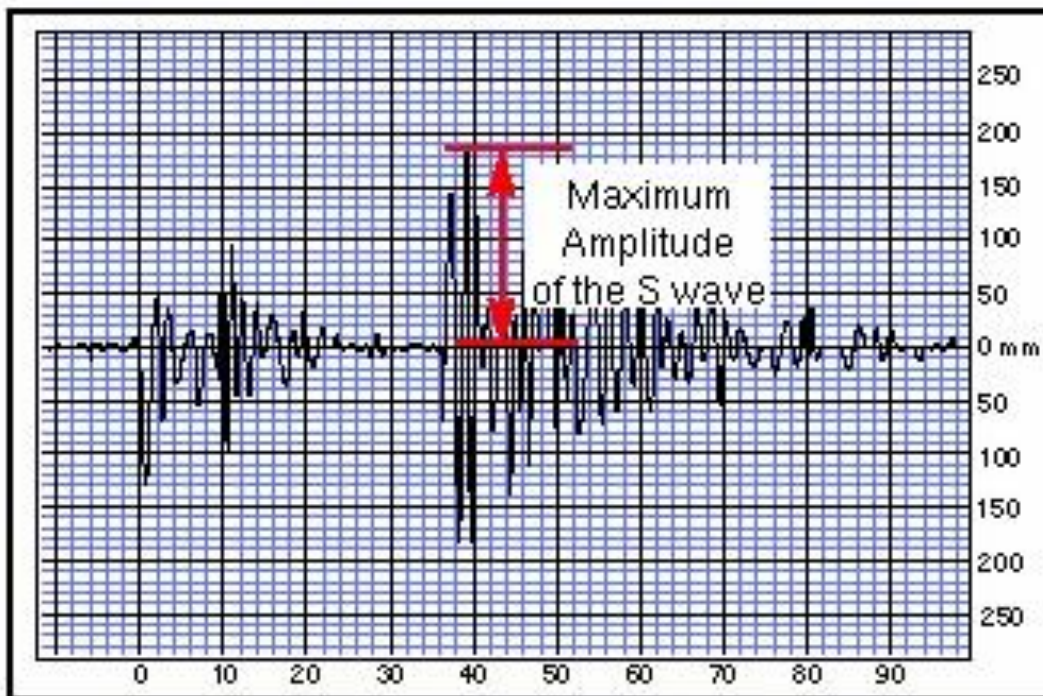


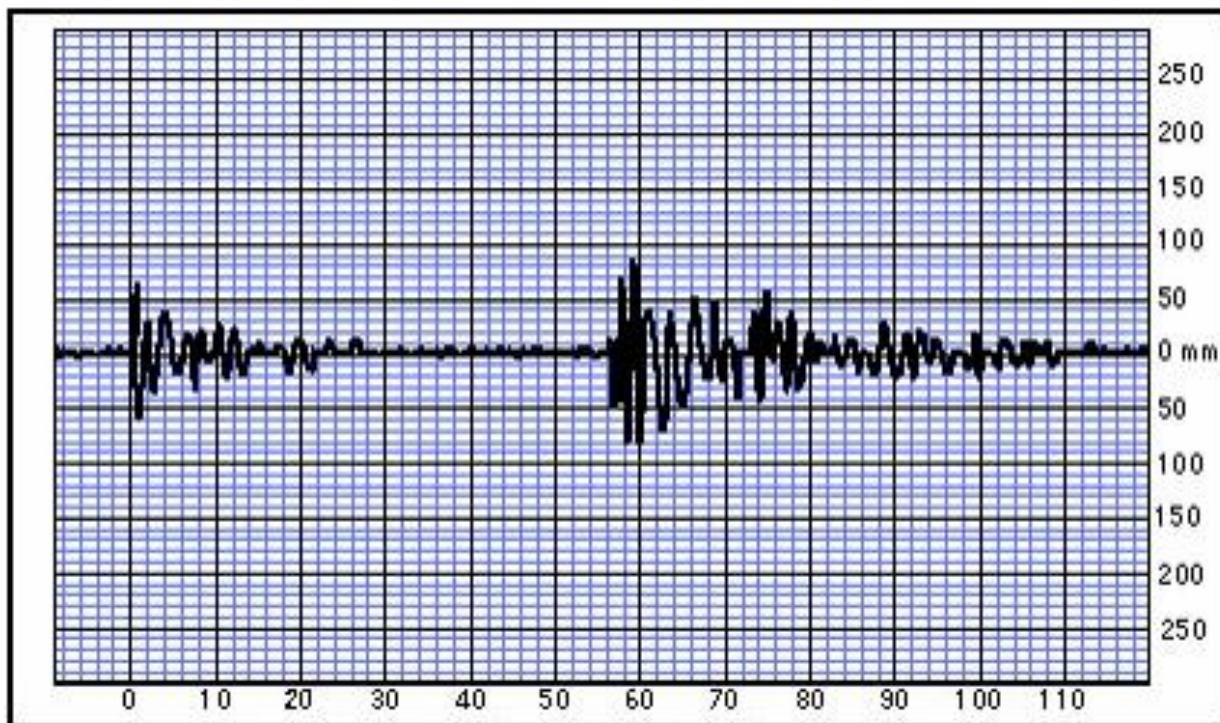
## Sample Seismograph:



## Sample Seismograph:



# Real Seismograph #1



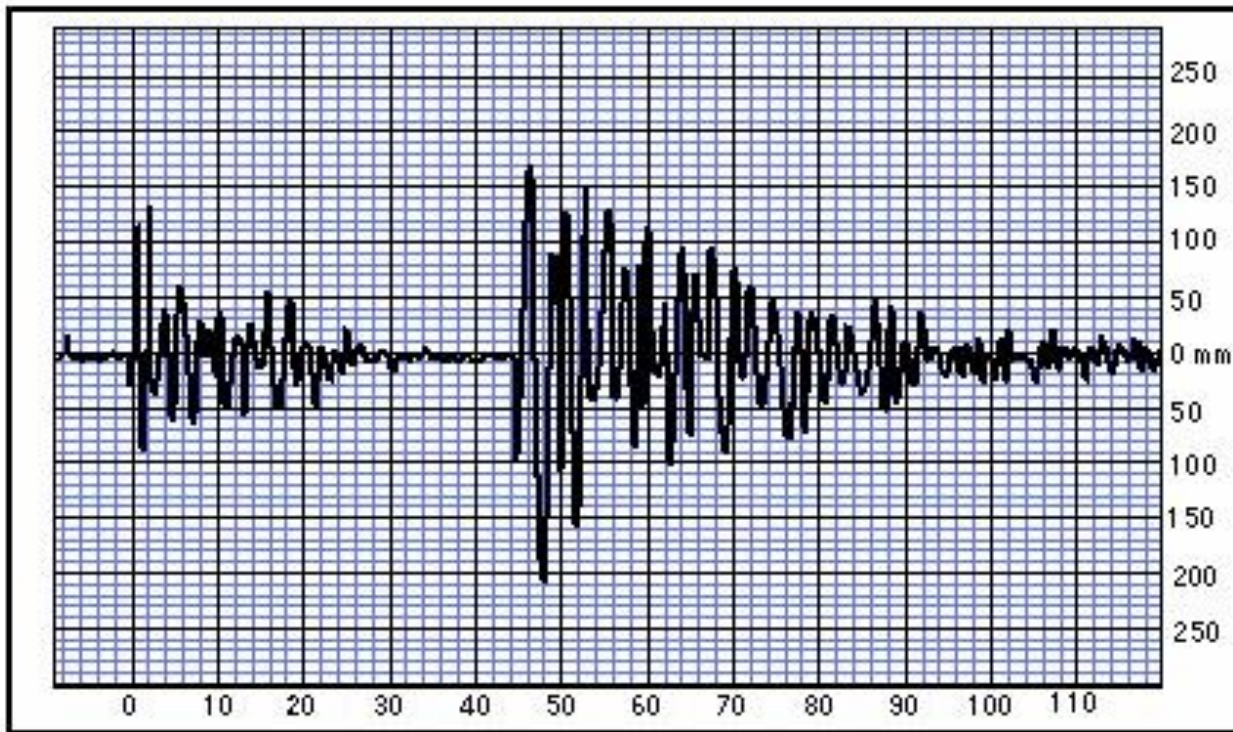
Pusan Seismic Station S-P Interval =  seconds

Distance from epicenter: \_\_\_\_\_ km

Maximum Amplitude: \_\_\_\_\_ mm



# Real Seismograph #2

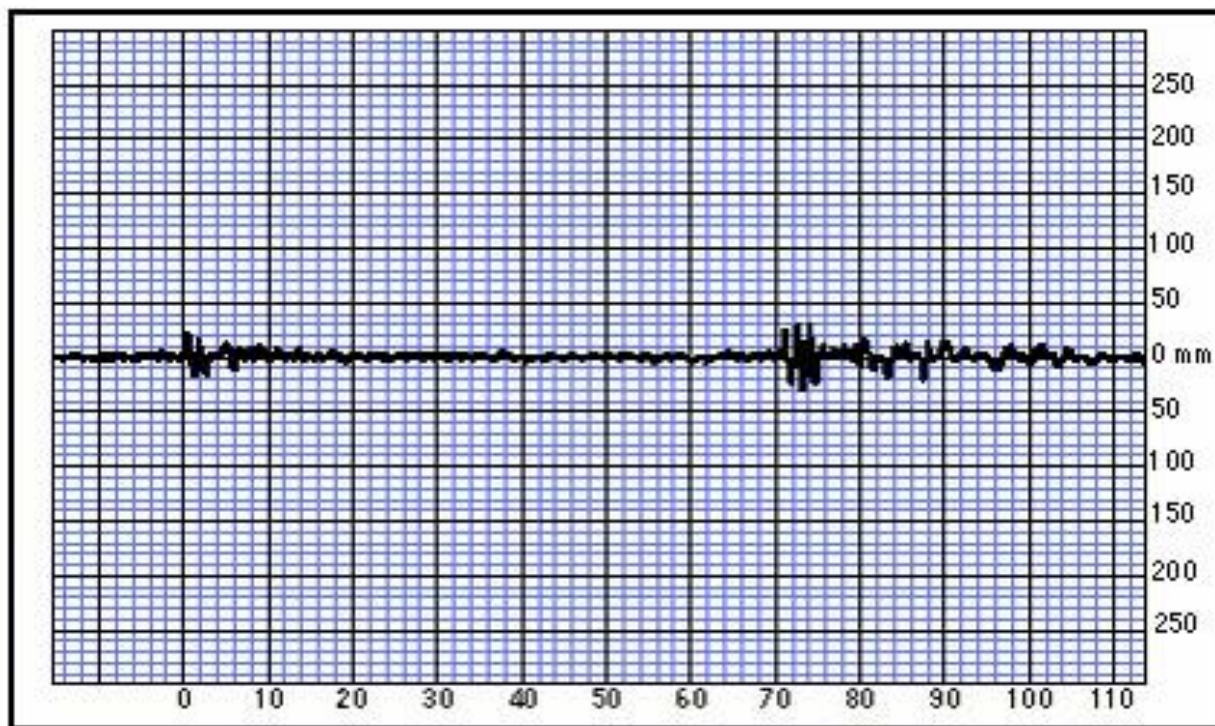


Tokyo Seismic Station S-P Interval =  seconds

Distance from epicenter: \_\_\_\_\_ km

Maximum Amplitude: \_\_\_\_\_ mm

# Real Seismograph #3

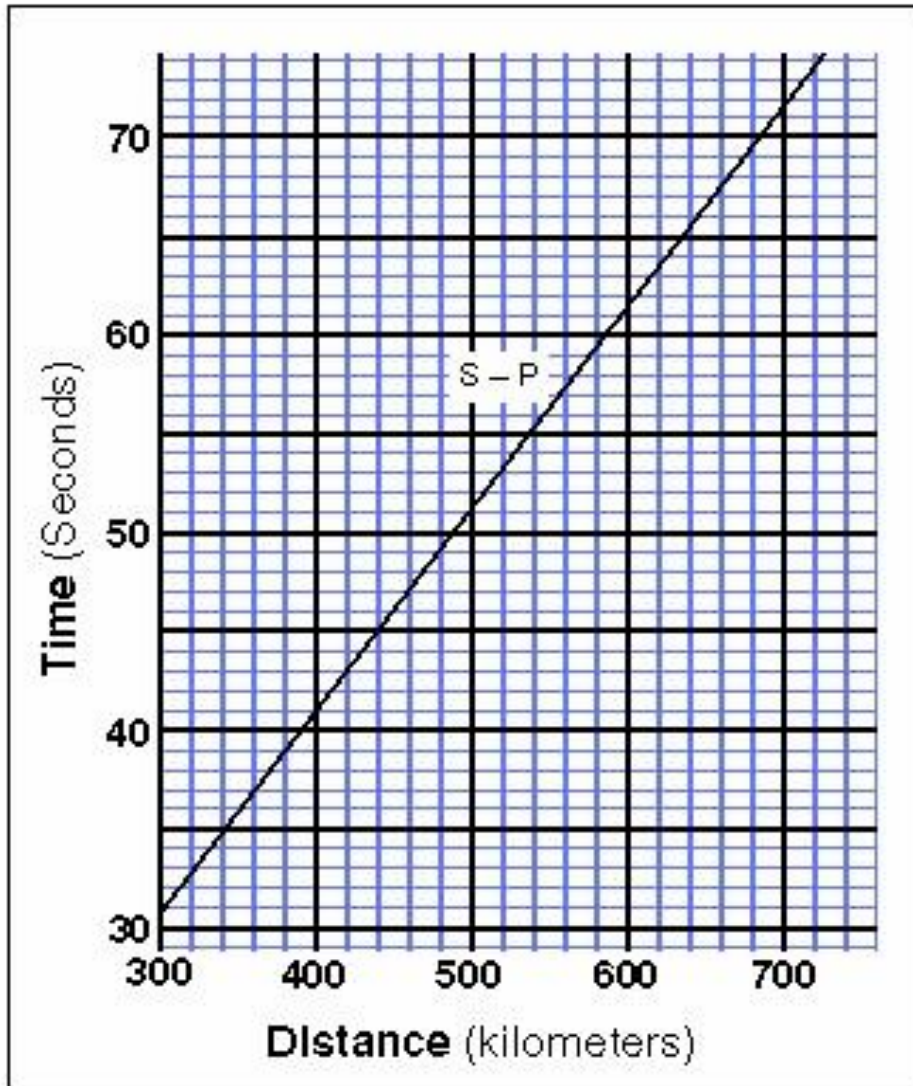


Akita Seismic Station S-P Interval =  seconds

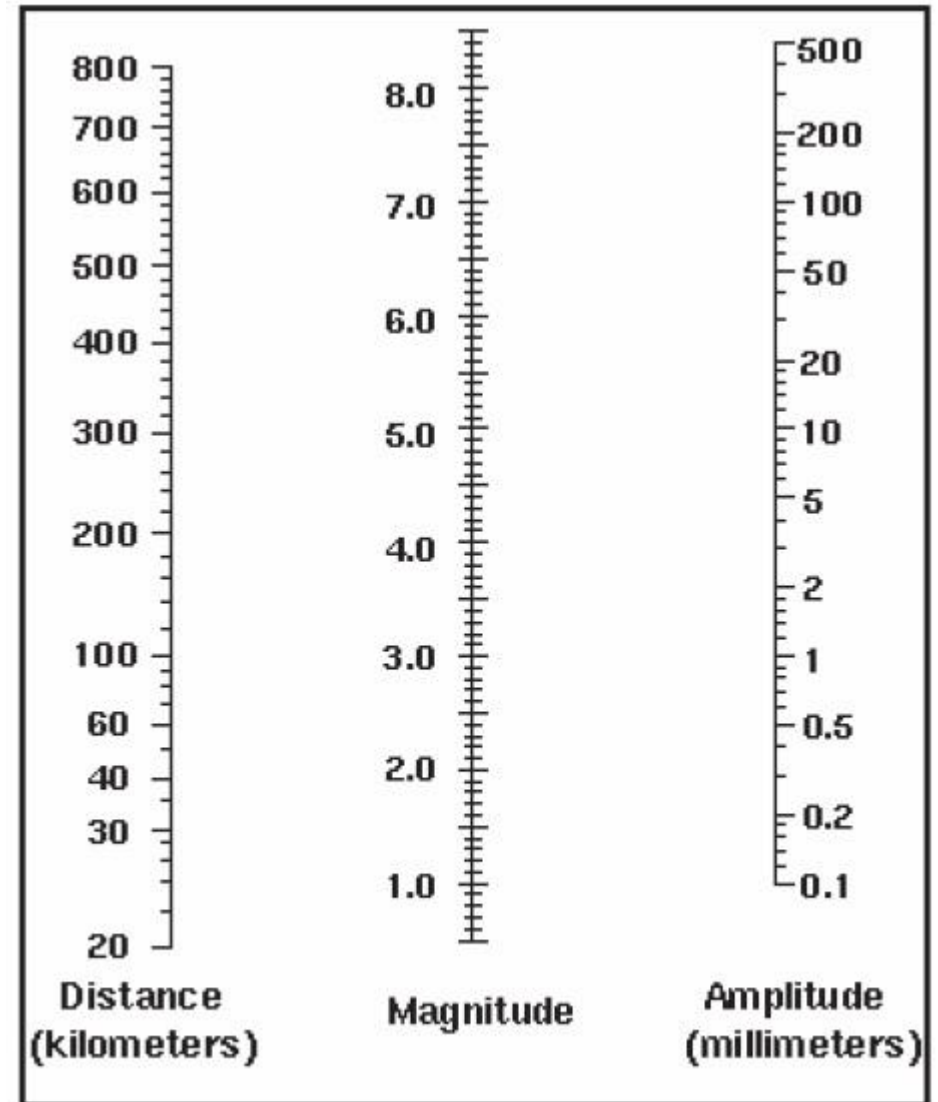
Distance from epicenter: \_\_\_\_\_ km

Maximum Amplitude: \_\_\_\_\_ mm

## S-P Graph



## Nonogram





# Where is the epicenter?



**Magnitude:** \_\_\_\_\_